



July 7-10

Jekyll Island Club Hotel · Jekyll Island, GA

CHAMBER CONFERENCE ATTENDEES

as of July 1, 2020



Adel-Cook County Chamber
Heather Green
President
heather.green@adelcookchamber.org



Ashburn-Turner County Chamber
Ashley Miller
Executive Director
turnercountychamber@gmail.com



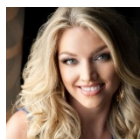
Augusta Metro Chamber
Sue Parr, GCCE
President & CEO
sue.parr@augustametrochamber.com



Barnesville-Lamar County Chamber
Melissa Lee
President
president@barnesville.org



Barrow County Chamber
Tommy Jennings, GCCE
President/CEO
trjennings@barrowchamber.com



Baxley-Applying County Chamber
Keri Orvin
President/CEO
chamberdirector@baxley.org



Baxley-Applying County Chamber
Karen Weideling
Vice President
daac@baxley.org



Berrien County Chamber
Lisa Smart
Executive Director
berrienchamber.lisa@windstream.net



Blairsville-Union County Chamber
Steve Rowe
President
President@blairsvillechamber.com



Brunswick-Golden Isles Chamber
Ralph Staffins, III, GCCE
President & CEO
rstaffins@bgicoc.com



Burke County Chamber
Ashley Roberts
President
burkechamber@selectburke.com



Carroll County Chamber
Daniel Jackson, GCCE
President/CEO
daniel@carroll-ga.org



Cartersville-Bartow County Chamber
Cindy Williams, GCCE
CEO
cindy@cartersvillechamber.com



Catoosa County Chamber
Amy Jackson
President/CEO
ajackson@catoosachamberofcommerce.com



July 7-10

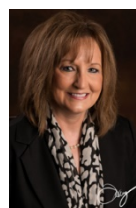
Jekyll Island Club Hotel · Jekyll Island, GA

CHAMBER CONFERENCE ATTENDEES

as of July 1, 2020



Cherokee County Chamber
Pam Carnes, GCCE
President & CEO
pam@cherokeechamber.com



Douglas-Coffee County Chamber
Lisa Hodge
President
lhodge@douglasga.org



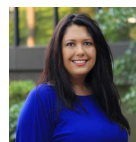
Cordele-Crisp Chamber
Monica Simmons, GCCE
President
msimmons@cordele-crisp-chamber.com



Dublin-Laurens County Chamber
Heath Taylor
President & CEO
htaylor@dublin-georgia.com



Covington-Newton County Chamber
Debbie Harper
President
dharper@newtonchamber.com



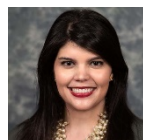
Dunwoody-Perimeter Chamber
Stephanie Freeman, GCCE
President & CEO
stephanie@preimeterchamber.com



Darien-McIntosh County Chamber
Mandy Harrison
President
mandy@mcintoshchamber.com



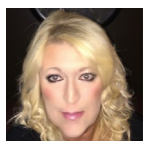
Eastman-Dodge County Chamber
Paula McCain
Chamber Manager
Paula@eastman-georgia.com



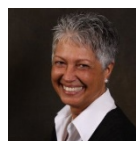
Dawson County Chamber
Christie Moore, GCCE
President
c.moore@dawson.org



Eatonton-Putnam Chamber
Roddie Anne Blackwell, GCCE
President & CEO
roddianne@eatonton.com



Dooly County Chamber
Rhonda Lamb-Heath
President/CEO
rhondabigpigjig@gmail.com



Fannin County Chamber
Dianne Mallernee
Director of Membership Services
dianneM@tds.net



Douglas County Chamber
Sara Ray
President & CEO
ray@douglascountygeorgia.com



Fitzgerald-Ben Hill County Chamber
Melissa Dark
Executive Director
melissa.dark@fitzchamber.net



July 7-10

Jekyll Island Club Hotel · Jekyll Island, GA

CHAMBER CONFERENCE ATTENDEES

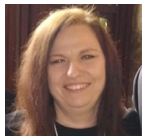
as of July 1, 2020



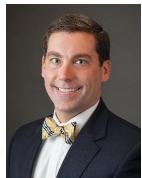
Forsyth County Chamber
James McCoy
President & CEO
jmccoy@foco-chamber.org



Forsyth County Chamber
Jimmy Lane
Executive Vice President
jlane@foco-chamber.org



Franklin County Chamber
Rita Shoemaker
Executive Secretary
chamber@franklin-county.com



Greater Dalton Chamber
Rob Bradham
President & CEO
bradham@daltonchamber.org



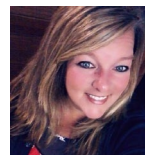
Greater North Fulton Chamber
Kali Boatright, GCCE
CEO
kboatright@gnfcc.com



Harris County Chamber
Kimberly Tharp
President & CEO
kim@harriscountychamber.org



Hazlehurst-Jeff Davis Chamber
Andrea Taylor, GCCE
President & CEO
ataylor@jeffdavisjda.com



Hazlehurst-Jeff Davis Chamber
Sonya Miller
President
sonya@hazlehurstchamberofcommerce.com



Hazlehurst-Jeff Davis Chamber
Shannon Kight
Past Chair
ataylor@jeffdavisjda.com



Hazlehurst-Jeff Davis Chamber
Eric Smith
Chairman of the Board
ataylor@jeffdavisjda.com



Heard County Chamber
Melinda Brown
President
info@heardchamber.com



Jefferson County Chamber
Amy Howard
President
ahoward@jeffersoncounty.org



Liberty County Chamber
Leah Poole
CEO
director@libertycounty.org



Milledgeville-Baldwin County Chamber
Angie Martin
President/CEO
amartin@milledgevillega.com



July 7-10

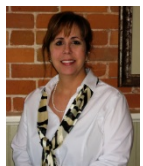
Jekyll Island Club Hotel · Jekyll Island, GA

CHAMBER CONFERENCE ATTENDEES

as of July 1, 2020



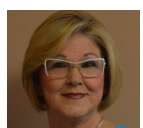
Monticello-Jasper County Chamber
Mandi Tanner
Executive Director
jasperchamber@bellsouth.net



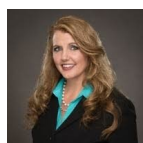
Moultrie-Colquitt County Chamber
Tommie Beth Willis
President
tbwillis@moultriechamber.com



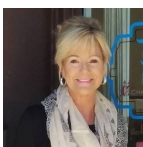
Newnan-Coweta Chamber
Candace Boothby, CCE, GCCE
President & CEO
candace@newnancowetachamber.org



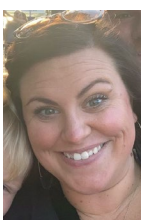
Ocilla-Irwin Chamber
Cathy Stott
President
ocillachamber@windstream.net



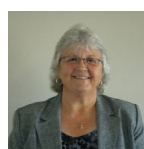
Paulding Chamber
Stacy Hamby
President/CEO
shamby@pauldingchamber.org



Pike County Chamber
Carol Perry
Interim Executive Director
info@pikecountygachamber.com



Quitman-Brooks County Chamber
Katheryn Patrick
Executive Director
qbccdiretor@gmail.com



Rabun County Chamber
Juanita Shope
President
juanitashope@rabunchamber.com



Roberta-Crawford County Chamber
Patti Temple
Executive Director
robertacrawfordcoc@gmail.com



Robins Regional Chamber
April Bragg
President & CEO
abragg@robinsregion.com



Rome Floyd Chamber
Jeanne Krueger
Interim Director
jkrueger@rome.ga.com



Rome Floyd Chamber
Thomas Kislak
Director of Membership
tkislak@rome.ga.com



Rome Floyd Chamber
Amber West
Communications Coordinator
awest@rome.ga.com



Screven County Chamber
Grace Waits
Executive Director
director@screvencounty.com



July 7-10

Jekyll Island Club Hotel · Jekyll Island, GA

CHAMBER CONFERENCE ATTENDEES

as of July 1, 2020



Statesboro-Bulloch Chamber
Skip Alford
President
skip@statesboro-chamber.org



Tifton-Tift County Chamber
Brian Marlowe
President & CEO
bmarlowe@tiftonchamber.org



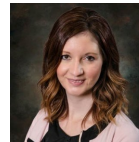
Swainsboro-Emanuel County Chamber
Ken Warnock
CEO
kjcw@goemanuel.org



Toombs-Montgomery Chamber
Michele Johnson
President
michelej@toombschamber.com



Sylvester-Worth County Chamber
Karen Rackley
President / CEO
karenrackley@msn.com



Walker County Chamber
Lacey Wilson
President
lacey@walkercochamber.com



Terrell County Chamber
Savannah Hughes
Executive Director
tcchamberdirector@gmail.com



Walton County Chamber
Teri Smiley, GCCE
President
teri@waltonchamber.org



Thomaston-Upson County Chamber
Lori Showalter Smith
President
lorishowalter@windstream.net



Warren County Chamber
Jeffrey Fowler
President / CEO
chamber@warrencountyga.com



Thomasville-Thomas County Chamber
Andrea Collins
Executive Director
andrea@thomasvillechamber.com



Warren County Chamber
Angela Wilkerson
Director of Operations
chamber@warrencountyga.com



Thomson-McDuffie County Chamber
Debbie Jones
Executive Director / CEO
Debbie.jones@thomson-mcduffie.net



Washington County Chamber
Katie Moncus
President
kmoncus@washingtoncountyga.com



July 7-10

Jekyll Island Club Hotel · Jekyll Island, GA

CHAMBER CONFERENCE ATTENDEES

as of July 1, 2020



Wayne County Chamber
Deena Bennett
Executive Director
dbennett@waynechamber.com

ADDITIONAL ATTENDEES

as of July 1, 2020



GEDA
Kevin Shea
President
KShea@georgia.org



Hodge Consulting Services, LLC
Al Hodge
Owner
ahodge@hodgeconsultingservices.com